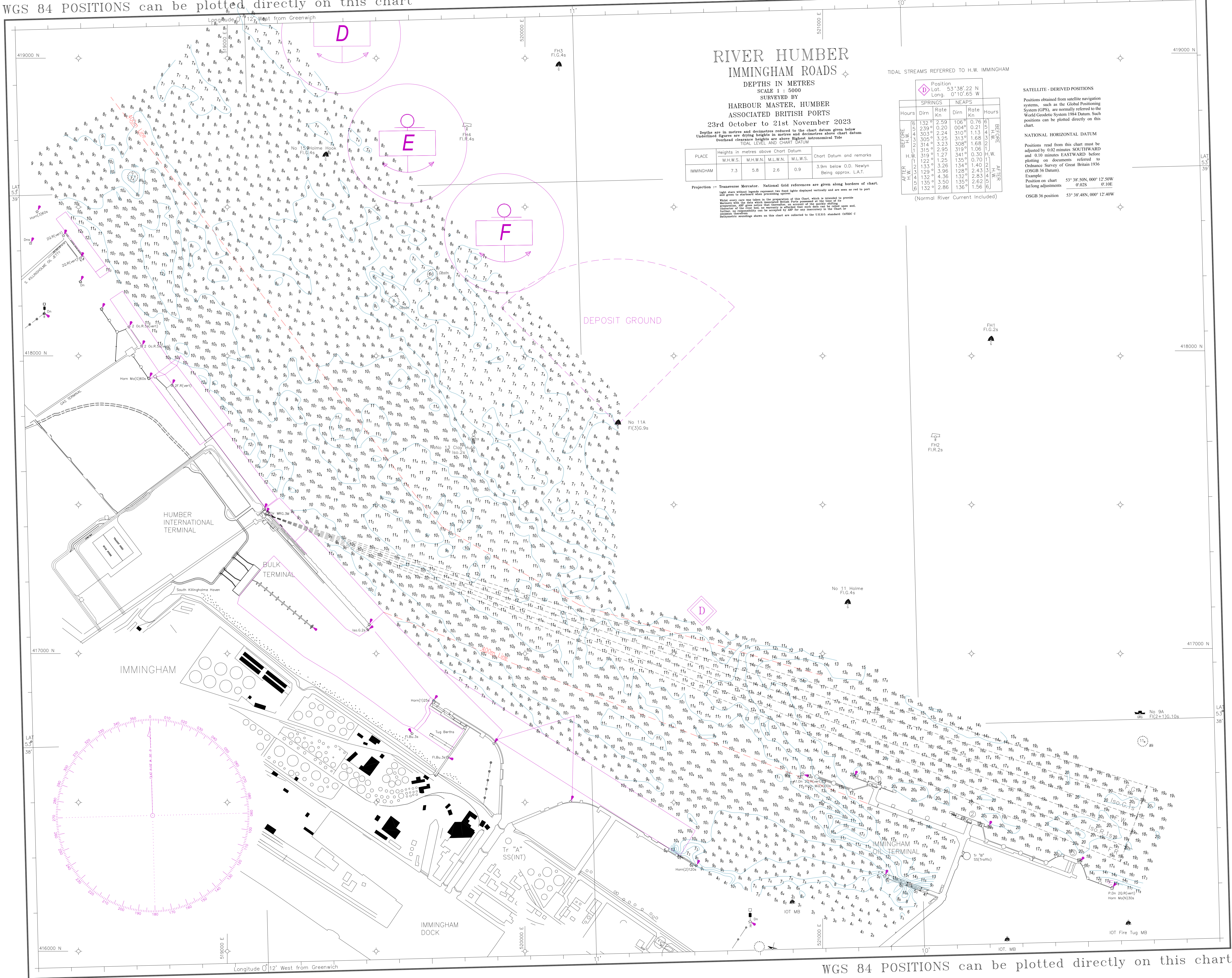


WGS 84 POSITIONS can be plotted directly on this chart

© Copyright 2023. All rights reserved. No part of this product may be reproduced in any form (including photocopying or by electronic means) without prior permission.



RIVER HUMBER IMMINGHAM ROADS

DEPTHS IN METRES

SCALE 1 : 5000

SURVEYED BY
HARBOUR MASTER, HUMBER
ASSOCIATED BRITISH PORTS

23rd October to 21st November 2023

Depths are in metres and decimetres reduced to the chart datum given below
Underlined figures are drying heights in metres and decimetres above chart datum
Overhead clearance heights are above Highest Astronomical Tide
TIDAL LEVEL AND CHART DATUM

PLACE	Heights in metres above Chart Datum				Chart Datum and remarks
	M.H.W.S.	M.H.W.N.	M.L.W.N.	M.L.W.S.	
IMMINGHAM	7.3	5.8	2.6	0.9	3.9m below O.D. Newlyn Being approx. L.A.T.

Projection - Transverse Mercator. National Grid references are given along borders of chart.

Light stars without legends represent two fixed lights displayed vertically and are seen as red to port and green to starboard when proceeding upriver.

When every use was taken in the preparation of this Chart, which is intended to provide navigators with the data which associated British Ports approved at the time of its preparation, all those who have taken part in the survey, and the quality of the work done, are hereby guaranteed. The responsibility for the accuracy of the information is accepted by the Hydrographic Office, and the responsibility for the accuracy of the information is accepted by the Hydrographic Office.

TIDAL STREAMS REFERRED TO H.W. IMMINGHAM

Hours	SPRINGS		NEAPS		Hours
	Dirn	Rate Kn	Dirn	Rate Kn	
6	132°	2.59	106°	0.76	6
4	239°	0.20	004°	0.21	4
3	305°	2.24	310°	1.13	3
2	305°	3.25	313°	1.68	2
1	314°	3.23	308°	1.68	1
1	315°	2.95	319°	1.06	1
H.W.	319°	1.27	341°	0.30	H.W.
1	122°	1.25	135°	0.70	1
2	133°	3.26	134°	1.40	2
3	129°	3.95	128°	2.43	3
4	132°	4.36	132°	2.83	4
5	135°	3.50	135°	2.62	5
6	132°	2.86	136°	1.56	6

(Normal River Current Included)

SATELLITE - DERIVED POSITIONS

Positions obtained from satellite navigation systems, such as the Global Positioning System (GPS), are normally referred to the World Geodetic System 1984 Datum. Such positions can be plotted directly on this chart.

NATIONAL HORIZONTAL DATUM

Positions read from this chart must be adjusted by 0.02 minutes SOUTHWARD and 0.10 minutes EASTWARD before plotting on documents referred to Ordnance Survey of Great Britain 1936 (OSGB 36 Datum).

Example:
Position on chart
lat/long adjustments
OSGB 36 position

53° 38' 50N, 000° 12' 50W
0.02S 0.10E
53° 38' 48N, 000° 12' 40W

WGS 84 POSITIONS can be plotted directly on this chart